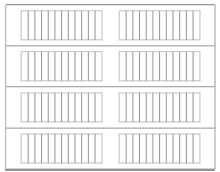




Shown in accents woodtones dark oak with optional stockton window inserts and spade hardware.

# 5916 STAMPED CARRIAGE HOUSE

LONG PANEL | 27 GAUGE STEEL | POLYURETHANE INSULATION | R-VALUE<sup>2</sup> R-16.55



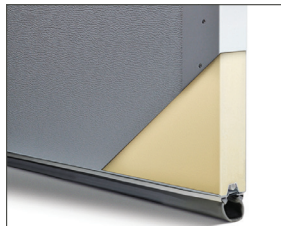
## Colors<sup>1</sup>



## Accents Woodtones



## Insulation



Polyurethane Insulation  
R-value<sup>2</sup>  
**R-16.55**

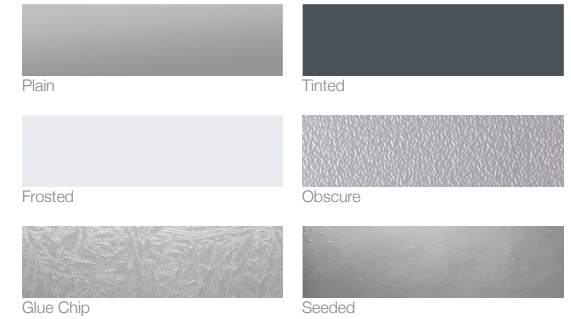
## Exterior Hardware



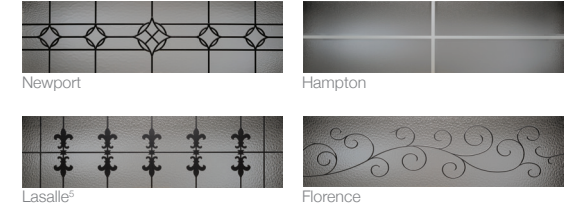
## Inserts



## Glass<sup>3</sup>



## Designer Glass<sup>4</sup>



<sup>1</sup> Refer to your local C.H.I. dealer for exact color match. <sup>2</sup> R-value testing is in accordance with ASTM C518 standards. <sup>3</sup> Textured or tinted glass lets light in while obscuring vision and improves the natural beauty of your home. <sup>4</sup> All designer glass are either transparent or semi-transparent. <sup>5</sup> Available in 21" sections only.

## APPEARANCE + LIFETIME PACKAGE

Upgrade lifetime protection plan to your garage door and its hardware. That not only sounds great but looks good too.



These garage doors are available as wind load doors. Refer to your local C.H.I. Dealer if wind load doors are required where you live.



## C.H.I. HASSLE-FREE WARRANTY

C.H.I. has a reputation for manufacturing quality garage doors, so it's only fitting that our hassle-free warranty outperforms all others.

Your Local Garage Door Professional

▶ Learn more at [www.chiohd.com/5916](http://www.chiohd.com/5916)